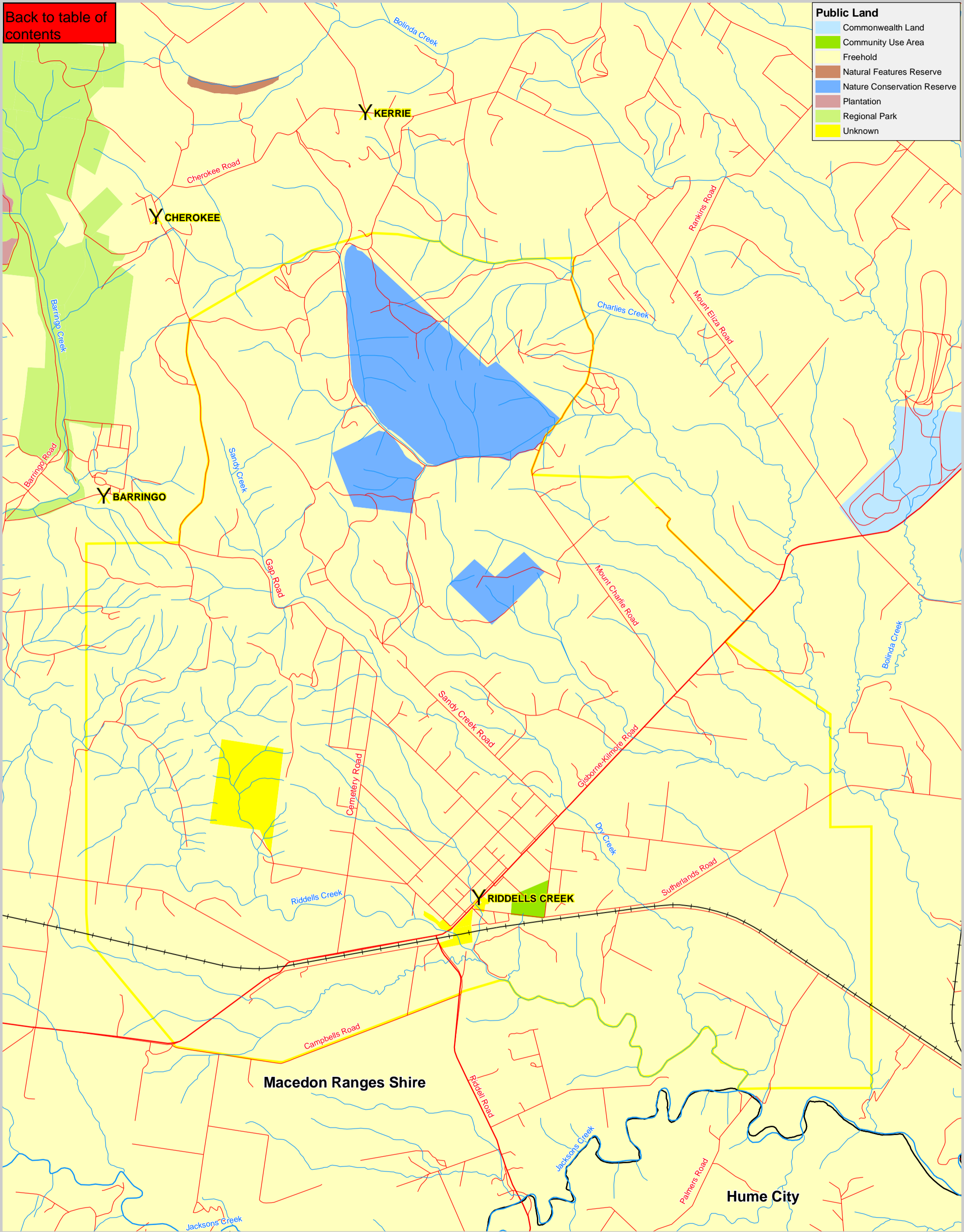


[Back to table of contents](#)

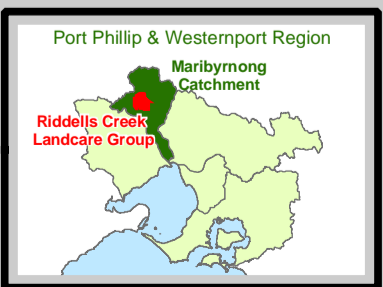
**Public Land**

- Commonwealth Land
- Community Use Area
- Freehold
- Natural Features Reserve
- Nature Conservation Reserve
- Plantation
- Regional Park
- Unknown



**Riddells Creek Landcare Group**

**Public Land & Local Government Boundaries**



**Port Phillip and Westernport**

**CATCHMENT MANAGEMENT AUTHORITY**

**Towns** (Y symbol)  
**Roads** (red line)  
**Railways** (black line with cross-ticks)  
**Waterways** (blue line)  
**Riddells Creek Landcare Group** (yellow outline)

**Local Government Boundaries** (black outline)

Scale 1:40,000

0 0.5 1 Kilometers

Contains cgdI information © The State of Victoria  
Disclaimer: This publication may be of assistance to you but the State of Victoria and its employees do not guarantee that the publication is without flaw of any kind or is wholly appropriate for your particular purposes and therefore disclaims all liability for any error, loss or other consequence which may arise from you relying on any information in this publication.