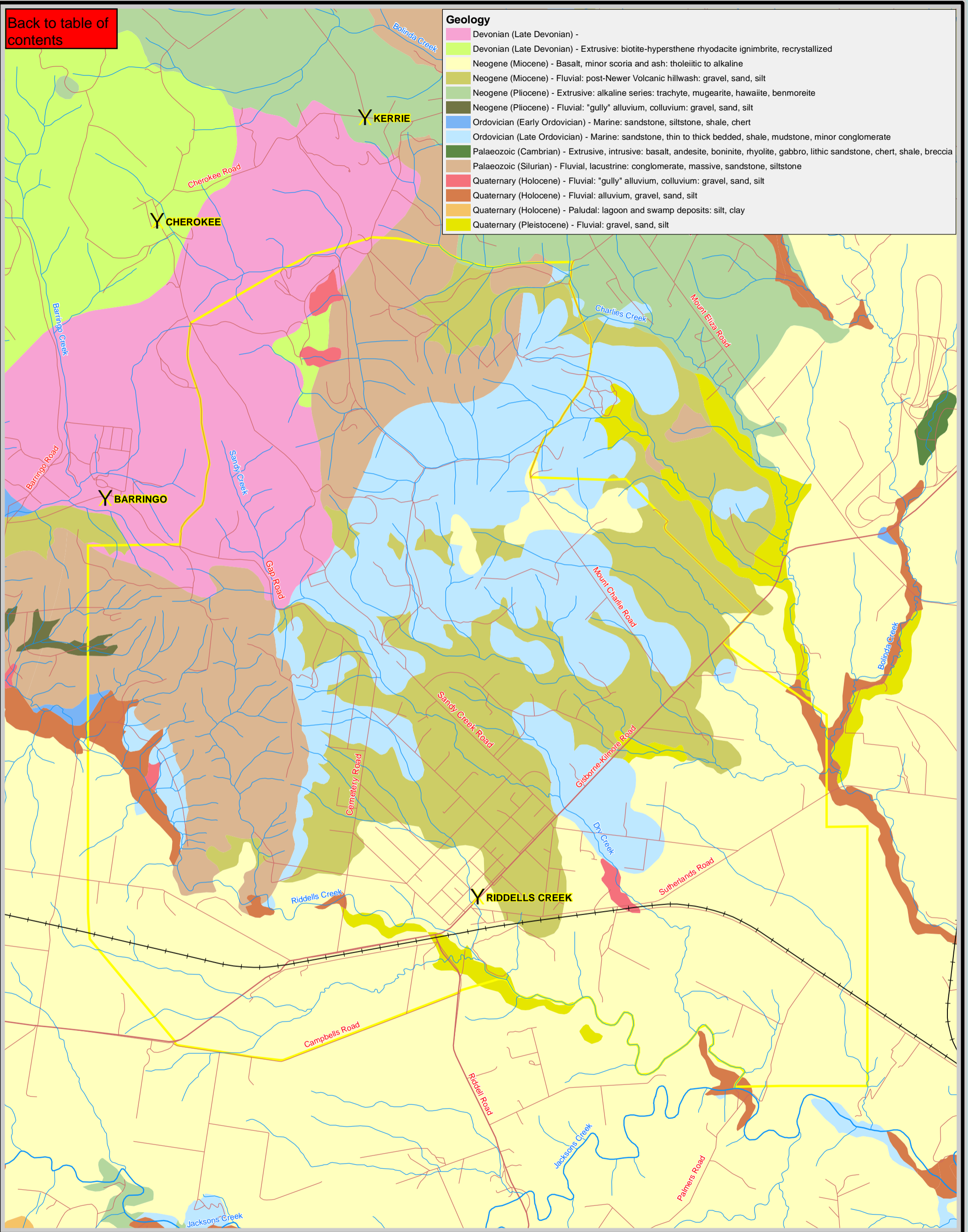


[Back to table of contents](#)

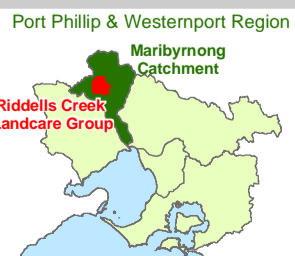
Geology

- Devonian (Late Devonian) -
- Devonian (Late Devonian) - Extrusive: biotite-hypersthene rhyodacite ignimbrite, recrystallized
- Neogene (Miocene) - Basalt, minor scoria and ash: tholeiitic to alkaline
- Neogene (Miocene) - Fluvial: post-Newer Volcanic hillwash: gravel, sand, silt
- Neogene (Miocene) - Extrusive: alkaline series: trachyte, mugearite, hawaiite, benmoreite
- Neogene (Pliocene) - Fluvial: "gully" alluvium, colluvium: gravel, sand, silt
- Ordovician (Early Ordovician) - Marine: sandstone, siltstone, shale, chert
- Ordovician (Late Ordovician) - Marine: sandstone, thin to thick bedded, shale, mudstone, minor conglomerate
- Palaeozoic (Cambrian) - Extrusive, intrusive: basalt, andesite, boninite, rhyolite, gabbro, lithic sandstone, chert, shale, breccia
- Palaeozoic (Silurian) - Fluvial, lacustrine: conglomerate, massive, sandstone, siltstone
- Quaternary (Holocene) - Fluvial: "gully" alluvium, colluvium: gravel, sand, silt
- Quaternary (Holocene) - Fluvial: alluvium, gravel, sand, silt
- Quaternary (Holocene) - Paludal: lagoon and swamp deposits: silt, clay
- Quaternary (Pleistocene) - Fluvial: gravel, sand, silt



Riddells Creek Landcare Group

Geology



Port Phillip and Westernport

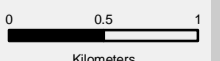


CATCHMENT MANAGEMENT AUTHORITY

- Towns
- Roads
- Railways
- Waterways
- Riddells Creek Landcare Group



Scale 1:40,000



Contains cgdI information © The State of Victoria
Disclaimer: This publication may be of assistance to you but the State of Victoria and its employees do not guarantee that the publication is without flaw of any kind or is wholly appropriate for your particular purposes and therefore disclaims all liability for any error, loss or other consequence which may arise from you relying on any information in this publication.